



## NEWS & MESSAGES

09 / 03

In this letter you'll find

- Don't forget...
- Weight Rules

Some statistics....

- **Don't forget...**

### Candidature for the FEI Endurance Committee:

Closing Date for applications is 31<sup>st</sup> May 2003 in respect of those places becoming available in 2004, but they should be forwarded to the FEI before the 15<sup>th</sup> May 2003 by your National Federation.

### Planned Revision of the Endurance Rulebook by the FEI

"The Endurance Rulebook is due for major revision in 2003. National Federations are requested to submit their suggested changes and modifications to the FEI Endurance Department by 30 June 2003." *Bulletin FEI 1/2003*

### Paris Motion: Qualifications for Championships

As published in newsletter 2/03 the FEI Endurance Committee changed the proposed qualification procedure of the Paris Motion from **"To be qualified to participate in a Championship or any other CEI\*\*\*\* ride..."** to **„To be qualified to participate in a Senior Championship or any other CEI\*\*\*\* ride“**.

The president of the French Equestrian Federation, Mme Jacqueline Reverdy, sent out a letter to the FEI to oppose to this (and some other) changement (see newsletter 7/03).

All those who want the original text of the Paris Motion to be applied, should send an according letter from their National Federation to the FEI.

## Weight Rules

Bulletin FEI 1/2003

“The FEI Bureau at its November meeting in Moscow approved the increase of the minimum weight to 75kg also approved the procedure for weighing. In the future, the bridles cannot be used when weighting out or in. However, riders will now be permitted to lose a maximum of 2 kg during the ride.”

See also letter from the FEI Endurance Committee, [newsletter 8/03](#).

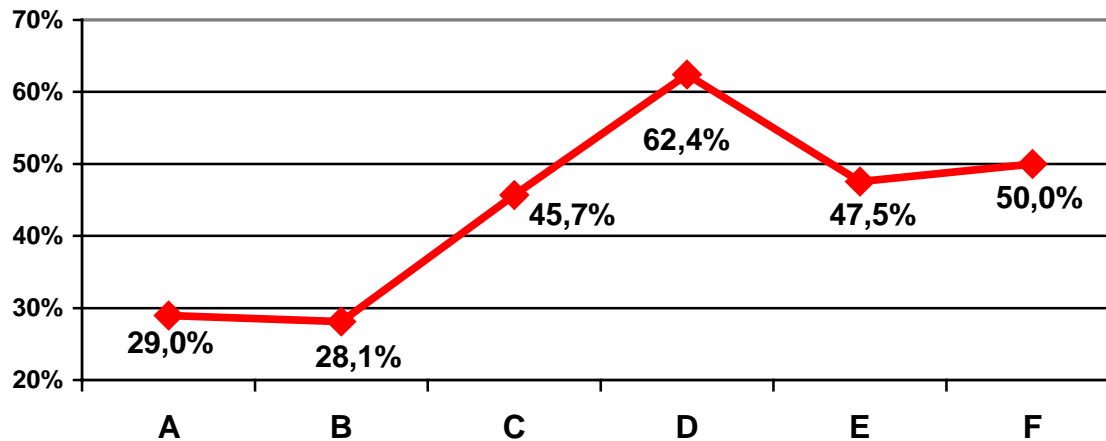
## COMPARISON: SPEED & COMPLETION RATE 2002 CEI\*\* 120 km/ 1 day (Results from 37 rides out of 64)

average winner's speed: 17.29 km/h

1231 starters (average of 33.3 participants per ride)

536 completions = completion rate **43.5 %**

SPEED / COMPLETION RATE IN %, 120 km/ 1 day 2002



Legend: **Winner's Speed in km/h**

	Speed	rides	started/completed
<b>A</b>	22.0 – 23.9	3	152 / 44
<b>B</b>	20.0 – 21.9	5	285 / 80
<b>C</b>	18.0 – 19.9	6	232 / 106
<b>D</b>	16.0 – 17.9	7	250 / 156
<b>E</b>	14.0 – 15.9	12	244 / 116
<b>F</b>	12.0 – 13.9	4	68 / 34

**SPEED & COMPLETION RATE 2002 CEI\*\*\* 160 km/ 1 day** (Results from 24 rides out of 29)

average winner's speed: 14.55 km/h

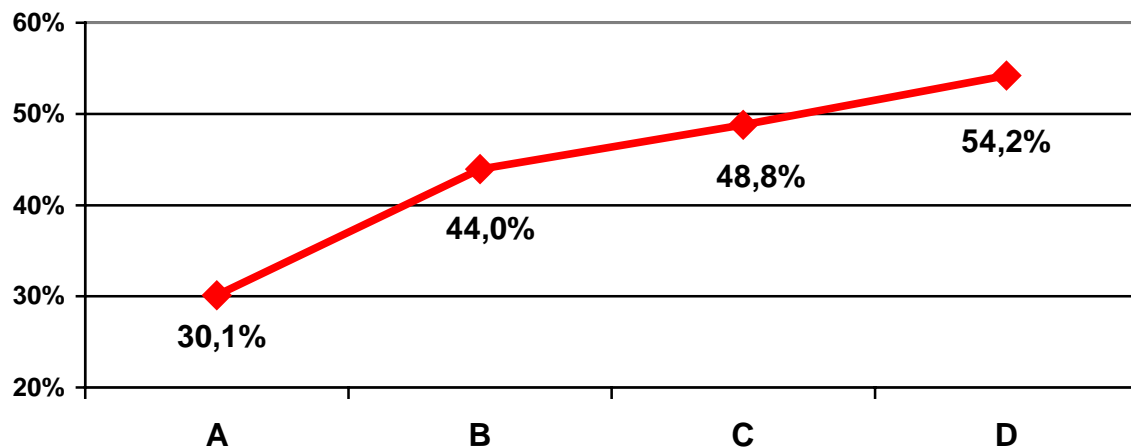
909 starters (average of 37.9 participants per ride)

416 completions = completion rate with Jerez \* **45.8 %**

completion rate without Jerez\* **50.4 %**

\* see "special case Jerez"

**SPEED / COMPLETION RATE IN %, 160 km/1 day 2002**



Legend: **Winner's Speed in km/h**

	Speed	rides	started/completed
<b>A</b>	18.0 -- 19.9	2	156 / 47
<b>B</b>	16.0 – 17.9	5	248 / 109
<b>C</b>	14.0 – 15.9	6	287 / 140
<b>D</b>	12.0 – 13.9	7	214 / 116

plus 1 ride, 4 starters/ 4 completions, winner's speed 9.36 km/h

**COMPARISON: NUMBER OF VET-GATES 2002 CEI\*\*\* 160 km/1 day** (Results from 19 rides out of 29)

Vet-Gates	Rides	Started/Completed	Completion Rate	Avg. Winner's speed
4	7	249 / 124	<b>49.8 %</b>	15.37 km/h
5 +	10	256 / 120	<b>46.9 %</b>	14.19 km/h
4 (Jerez WEG + Pre-ride)	2	274 / 96	<b>35.0 %</b>	18.31 km/h

« Special Case Jerez »

**COMPARISON of the COMPLETION RATES:** **160 km/1 day**, all ELDRIC Rides 1996 – 1999  
**200 km/2 days**, all ELDRIC Rides 1996 - 1999  
**Jerez de la Frontera, 200 km/ 2 days**, ELDRIC Rides 1996 - 1999

